



User manual

iTALC – Intelligent Teaching And Learning with Computers
Version 1.0.4

ITALC



Copyright © 2004-2007 Tobias Doerffel
<http://italc.sf.net>

Table of Contents

1. Copyright.....	3
2. Program description.....	3
3. Program start.....	4
4. User interface.....	5
4.1 Upper menu bar.....	6
4.1.1 Classroom.....	6
4.1.2 Overview.....	6
4.1.3 Demo on/off.....	6
4.1.4 Demo/window on/off.....	6
4.1.5 Lock/Unlock all.....	7
4.1.6 Text message.....	7
4.1.7 Power on.....	7
4.1.8 Power down.....	7
4.1.9 Logon.....	7
4.1.10 Adjust/align.....	8
4.1.11 Auto view.....	8
4.2 Left menu bar.....	9
4.2.1 Overview.....	9
4.2.2 Classroom management.....	10
4.2.2.1 Add Classroom.....	10
4.2.2.2 Add computer.....	11
4.2.3 Logged in users.....	12
4.2.4 Snapshots.....	12
4.2.5 iTALC-Configuration.....	13
4.2.6 Support.....	14
4.3 Full screen/window Modus.....	15
4.3.1 Remote control/ View only.....	15
4.3.2 Lock student/Unlock student.....	15
4.3.3 Snapshot.....	15
4.3.4 Window / Full Screen.....	15
4.4 Troubleshooting.....	16
4.4.1 iTALC service is not running.....	16
4.4.2 No connection/ No error message.....	16
4.4.3 Authentication error.....	16

1. Copyright

iTALC – “Intelligent Teaching And Learning with Computers“ is subjected to GNU General Public Licence and was conceived and developed by Tobias Doerffel. All rights reserved by Tobias Doerffel © 2004-2008

2. Program description

iTALC is a didactic software program, which was developed especially for computer-work at schools. Nevertheless it can be used in other learning environments.

iTALC provides the opportunity to monitor and influence trainee activities and consequently supports the work with modern technique in the classroom.

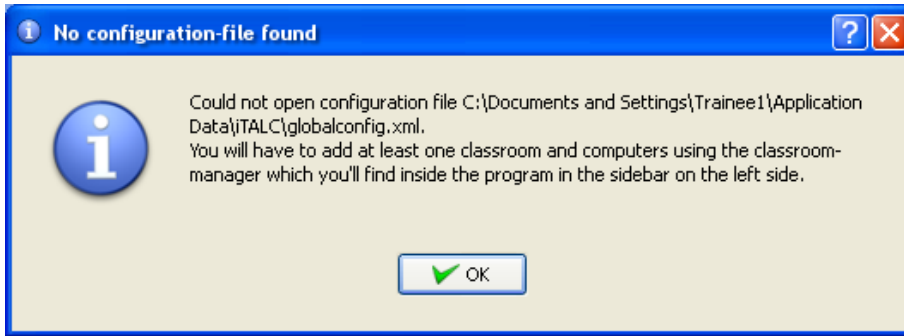
For example you are able to see the content of the trainee’s screens on your own screen. If one of the trainees needs assistance, you can access the trainee’s desktop and engage supportively. The trainee sees all of your actions and is so able to learn new procedures.

If you have to make a new circumstance understandable for the trainee, you can change to the demo-mode. The trainee has also the possibility to demonstrate something. For this action it is necessary to click on his desktop screen to bypass his screen to the screens of other trainees.

iTALC has other functions, too. Like locking the trainee screens, so that they are not able to work any further and are constrained to give you attention.

3. Program start

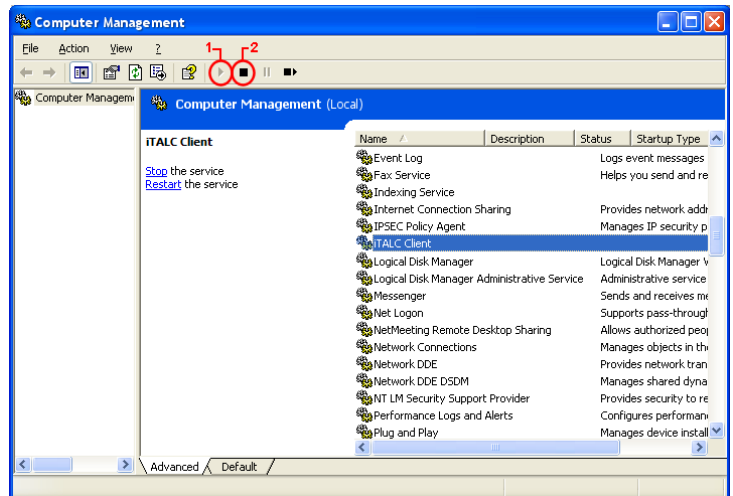
On the first startup of iTALC a dialog appears, which is indicating that there is no configuration file existing. This file will be created, as soon as you make changes in the program configuration. Confirm this hint by clicking “OK”.



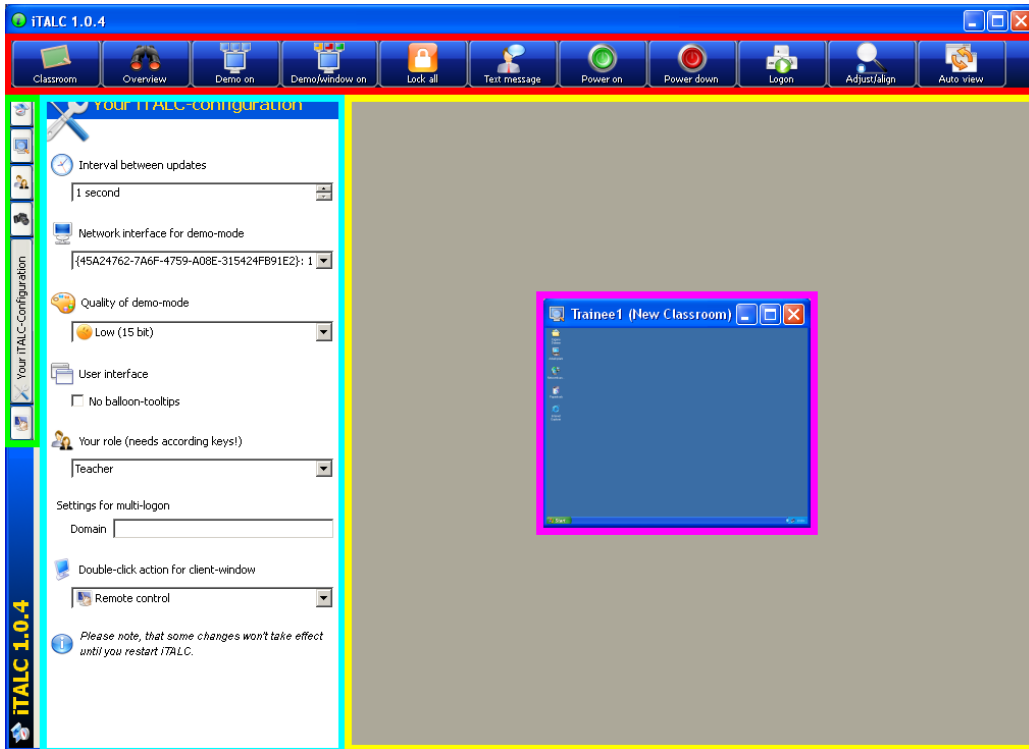
If iTALC is already running on the master PC or a client PC, the iTALC logo appears on the right side of the task bar.

A service is used to ensure several functionalities to some programs. Services are running hidden.

To activate the service (if it's not already active), go to Settings Control Panel Administrative Tools Computer Management, select the service “iTALC Client” and click the triangle button **1** (start) in the menu bar. To stop the service, click on the rectangle button **2** (stop).



4. User interface



- upper menu bar
- left menu bar
- working area for the upper menu bar
- working area for the left menu bar
- client-window

4.1 Upper menu bar

After starting the program the program surface of iTALC appears. On the upper screen you will find a menu bar with following, explained options:



4.1.1 Classroom



You can choose the active classroom.

By clicking the button “Classroom” a context menu appears, with which you are able to choose a classroom or to hide the teacher’s pc.

4.1.2 Overview



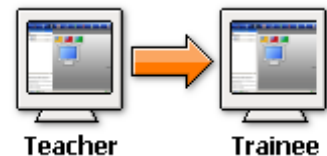
Default mode in iTALC. Gives you the opportunity to get an overview of all connected computers.

Also all locked computers will be unlocked or the demo mode will be left if you press this button.

4.1.3 Demo on/off



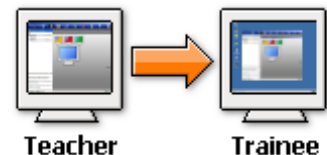
Fullscreen demo. In this mode your screen will be transferred to all shown computers. Also the users are not able to operate at the computers, because their input devices are locked.



4.1.4 Demo/window on/off



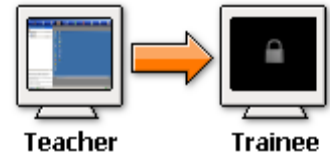
Window-demo. In this mode your screen will be transferred to the trainees screen in a window. The users can change to other windows for continuing their work.



4.1.5 Lock/Unlock all



Lock/Unlock desktops. To gain the full attention of the users, you can lock up their desktops by pressing this button. In this mode all input devices are locked and the screens of the trainees are turned black.



4.1.6 Text message



Use this button to send a text message to all active users. For example you can send them new instructions.

Click on the button "Text message". With the appearing window you are able to type in a text message. On Clicking "OK" the message will be send to all active computers.



4.1.7 Power on



Click this button to turn on all shown computers. On this way you do not have to turn on every single computer manually.

Note: "Wake Up on Lan" has to be set on in the BIOS if it's possible.

4.1.8 Power down



Click on this button to power down all shown computers (e.g. after lesson ending).

4.1.9 Logon



Remote Logon. After clicking this button you are able to logon to all shown computers by typing in username and password.

Note: The computers should not be already logged in with any other username.

4.1.10 Adjust/align



Adjusting windows and their size. On clicking this button the windows will be adjusted to the highest possible size. Also all windows will be aligned new.

4.1.11 Auto view

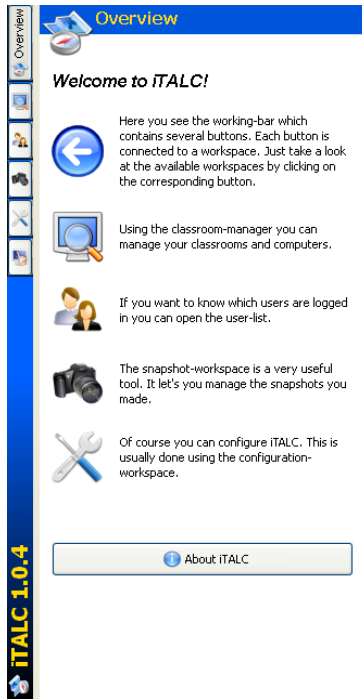


Click this button to align all active windows in order.

4.2 Left menu bar

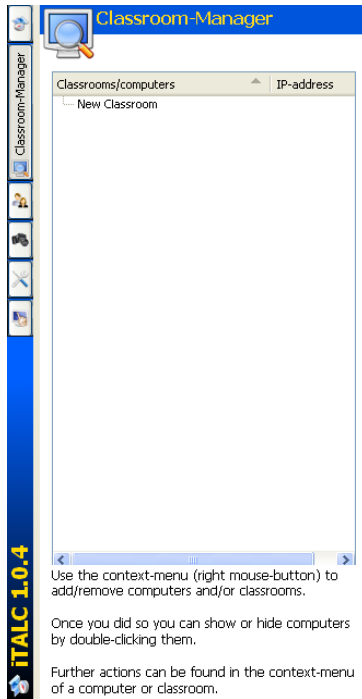
On the left side of the program surface you will find another menu bar with configuration options for iTALC.

4.2.1 Overview



The button “Overview” leads to a welcome page, where you get some short explanations about the menu items of the left menu bar.

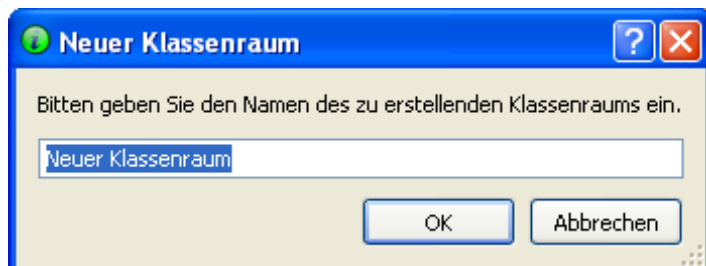
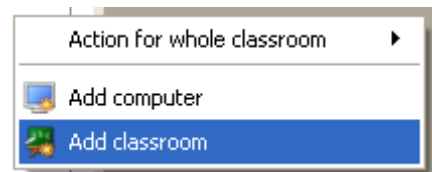
4.2.2 Classroom management



Right click to open the context-menu. In this menu you can add a computer or/and classroom to the management tree. Now you are able to hide or show computers per double click. More actions can be found in the context menu of a computer or classroom.

4.2.2.1 Add Classroom

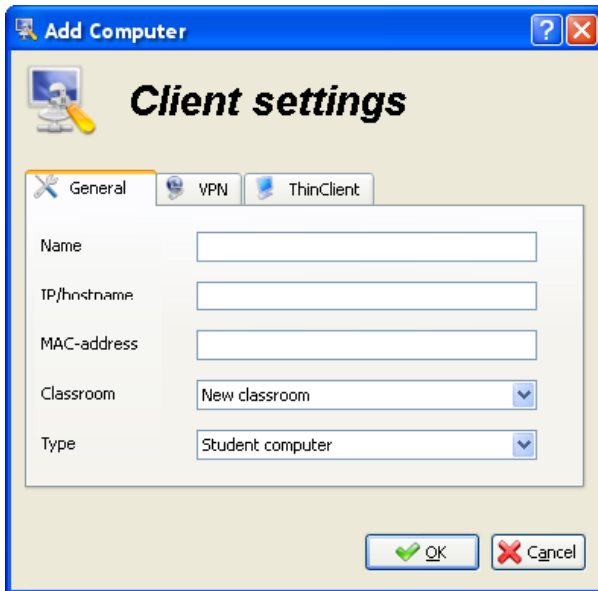
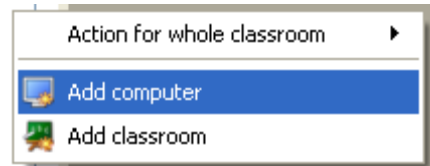
Right click to open the context-menu.
Choose "Add classroom".



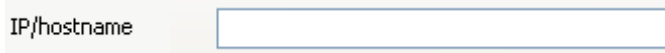
A new window appears. Type in the name of the new classroom and confirm with "OK". The new classroom should appear in the Classroom management tree.

4.2.2.2 Add computer

Open the context-menu by right click. Choose “Add computer”. If there is no classroom you will be asked to create one.

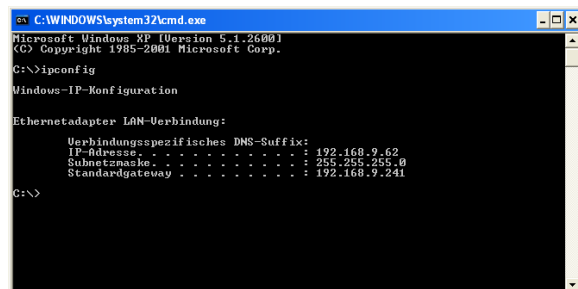
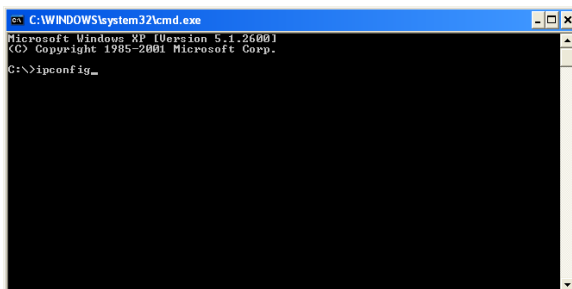


In the following window you are able to type in the name of the computer and the computer's specific name. It's not necessary to type in the MAC-address. You can choose to which classroom the new computer should be assigned to. Also you can choose which function the computer should accomplish.



Please type in the IP or the PC-name (hostname) here. If there is one, you can also add the appendant domain. Optional you have the possibility to add the port apart with a double point (e.g. 123.123.123.123:1234).

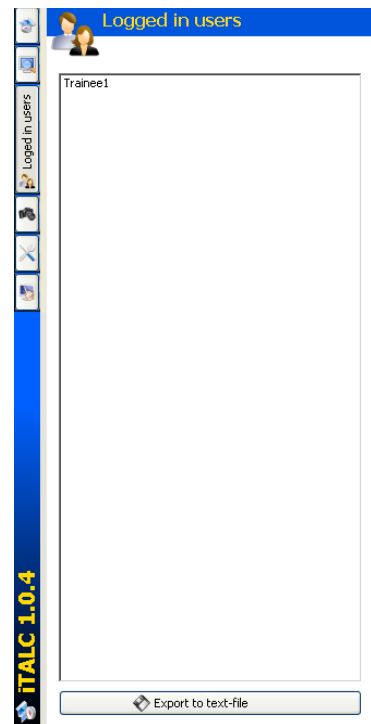
To find out which IP the computer has go to Start -> Run. A new window appears. Type in “cmd”. A black window appears. Type in “ipconfig”.



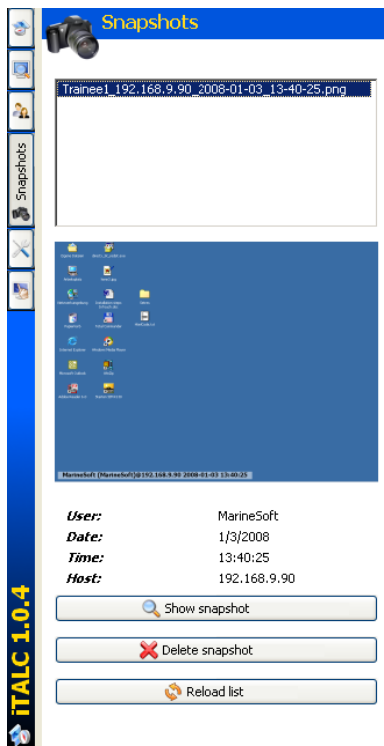
4.2.3 Logged in users

Here you get an overview about all logged in users.

Click on “Export to text-file” to export the list of logged in users in a text-file.



4.2.4 Snapshots



Snapshots are desktop screenshots of a connected pc screen. You can create them in the “view only” mode or remote control mode.

In this area you are able to manage your snapshots.

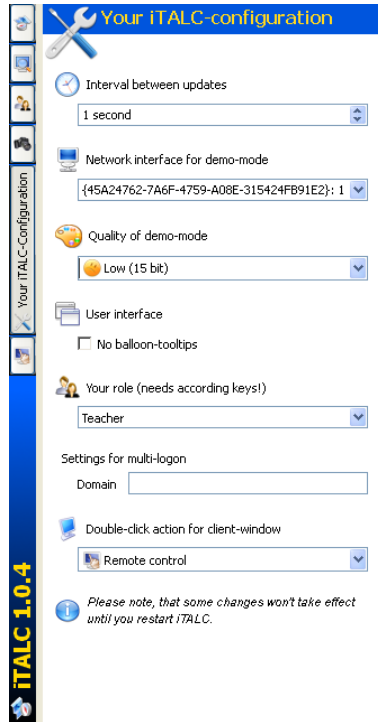
Click on the button “Show snapshot” to view the snapshot you have selected.

Click on the button “Delete snapshot” to delete the selected snapshot.

Click on “Reload list” to refresh the list of snapshots.

4.2.5 iTALC-Configuration

In the configuration menu you can change following settings:



Interval between updates

Here you can set the interval until the next refresh of the connected computers at the master computer.

Network interface for demo-mode

You have the choice which network interface you want to use.

Quality of demo-mode

You can choose which color depth you want to use in the demo mode: low (15Bit), middle (18Bit) or high quality (True color).

User interface

Here you can activate or deactivate the balloon-tips.

Your role (needs according keys!)

Choose which use your pc in the network has. (Teacher, Administrator, Supporter, Other)

Setting for multi-login

Please type in the Domain for the multiple login.

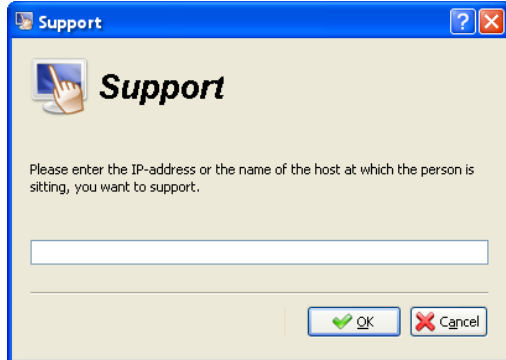
Double-click action for client-window

You can choose which event should be executed on a double click.

(Remote control, live in full screen)

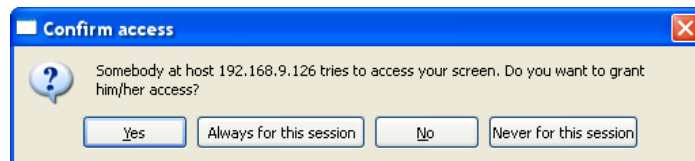
4.2.6 Support

This function gives you the opportunity to control any Client-PC, which has not to be listened in a classroom.



Click on the button “Support someone” to open a new dialog for the IP entry. Type in the IP of the PC you want to control and confirm by clicking “OK”.

As soon as you want to access a PC, which is not listened in a classroom, a dialog appears on the screen of the client PC. This dialog informs the user that someone external wants to access this Computer. Confirm this dialog by clicking “Yes” or by clicking “Always for this session” to allow the external access.



4.3 Full screen/window Modus

Right click on the window of the client you want to access to open the context menu. In this menu you can choose between “View live” and “Remote control” to watch the connected PC in full screen mode.

In the full screen mode a menu appears as soon as you move the cursor to the upper side of the screen.



This menu has following options:

4.3.1 Remote control/ View only



Click the button “Remote control” to gain access to the connected PC, if you are in the “View only” mode.



If you are in the “Remote control” mode click the button “View only” to free the access to the connected PC.

4.3.2 Lock student/Unlock student



In both cases you have the option to lock a connected pc by clicking the button “Lock student”.



You can unlock the trainee by clicking “Unlock student”.

4.3.3 Snapshot



You are able to create a snapshot (screenshot) of the connected PC screen by any time. Just click the button “Snapshot”.

4.3.4 Window / Full Screen



If you are watching or controlling a connected computer in full screen view just click the button “Window” to change the view into a smaller window.

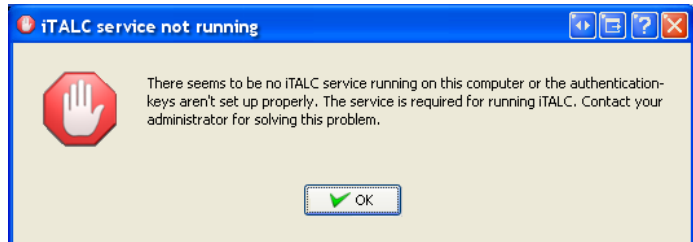


To get back to fullscreen view click the button “Fullscreen”.

4.4 Troubleshooting

4.4.1 iTALC service is not running

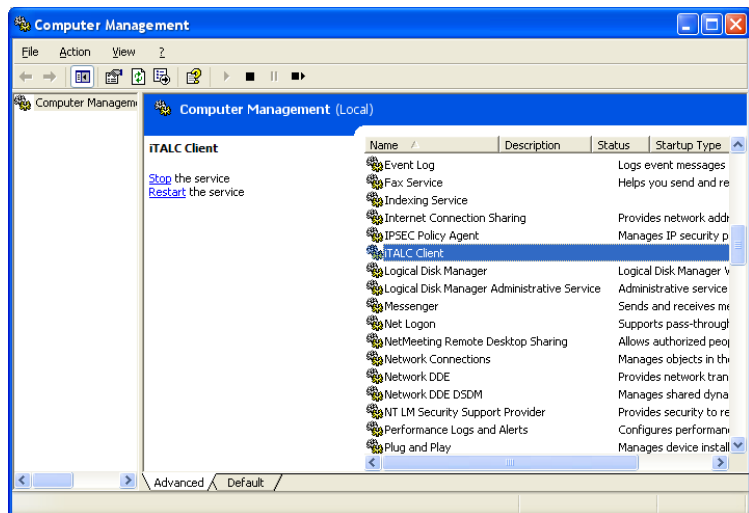
Appears this message on the program start of iTALC, the iTALC-Service is possibly not active or not correct installed.



To solve this problem reinstall iTALC or go to

Settings -> Control Panel -> Administrative Tools -> Computer Management. Reactivate the iTALC-Service, if it's listened.

To reactivate the service select the service "iTALC Client" from the list and click the triangle-button (play) in the menu bar.



4.4.2 No connection/ No error message

If no error messages appears when you can not connect to the client, possibly the client PC has no correct installed iTALC service or a inactive service. To solve this problem use the same solution as in 4.4.1 used on the client PC.

4.4.3 Authentication error

If the access to a client fails and following message appears on the client's screen, possibly the wrong key is used on the client's pc. To correct this failure you have to transfer the key from the master pc to the client.



